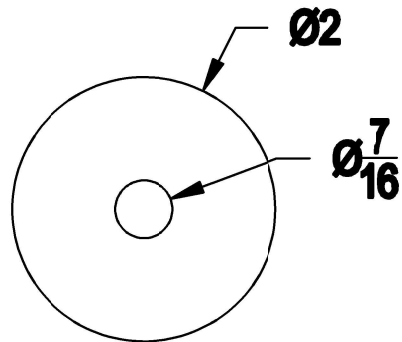
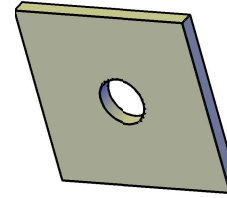


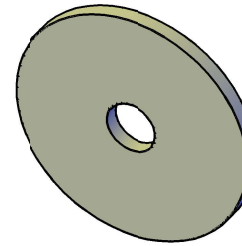
CH15-01 —  $\text{Ø} \frac{13}{32}$



CH15-02



**Material 12 ga. G60 Galv.  
Grade 40**



**Material 11 ga. CRS  
Grade 40**

TOLER. UNLESS SPECIFIED:		CH MACHINE	
ANGLES:	± 0' 30'	P.O. BOX 588	
FRACTIONS:	± 1/64	VERNON, ALABAMA 35592	
2 PLACE DECIMALS:	± .010	TITLE:	
3 PLACE DECIMALS:	± .005	<b>CH15-01 &amp; 02</b>	
REF.:		SIZE:	REV:
DATE:		<b>B</b>	<b>1</b>
DRAWN BY:		SCALE: 1=1   SHEET 1 OF 1   DRAWN BY:	
		REFERENCE:	